

Knit Tabard – For the Horde



Materials:

US 6 (4mm) needles

Cable needle, if desired.

Main colour A

Contrast colour B

I used Red Heart Comfort in 930 yard balls and had PLENTY left over.

Notes:

- Center motif measures 27 stitches across and 40 stitches high. I used a motif from <http://www.ravelry.com/patterns/library/horde-chart> , but any motif within these measurements will do.
- Multiple balls of the same colour will be required as colour is worked flat from both sides.
- Tabard is worked in front and back sections and sewn at shoulder seams.
- Charts are included for each section and are worked from the bottom up. Symbols for the charts are included at the end of this document.

Special stitches:

C6F - transfer 3 stitches to cable needle, bring to front. Knit 3 stitches from left needle, then three stitches on cable needle.

C6B - transfer 3 stitches to cable needle, bring to back of work. Knit 3 stitches from left needle, then three stitches on cable needle.

----XXX---

Front (refer to chart below as well if this works better for you)

With main colour A, cast on 61 stitches.

Knit 6 rows (ends in a RS row)

Row 7) With A, K5 P1. Changing to B, P49. With A P1, K5.

Row 8) With A, K6. With B, K49. With A, K6.

Repeat rows 7 & 8 two more times.

Row 13) With A: K5, P1. With B, P6. With A, P37. With B, P6. With A, P1 K5.

Row 14) A: K6. B: K6. A: K36. B: K6. A: K6

Repeat rows 13 and 14 two more times.

Row 19) With A: K5, P1. With B, P6. With A, P37. With B, P6. With A, P1 K5.

****Begin cable repeat****

Row 20) A: K6 B: C6F A: K37 B: C6B A: K6

Row 21) With A: K5, P1. With B, P6. With A, P37. With B, P6. With A, P1 K5.

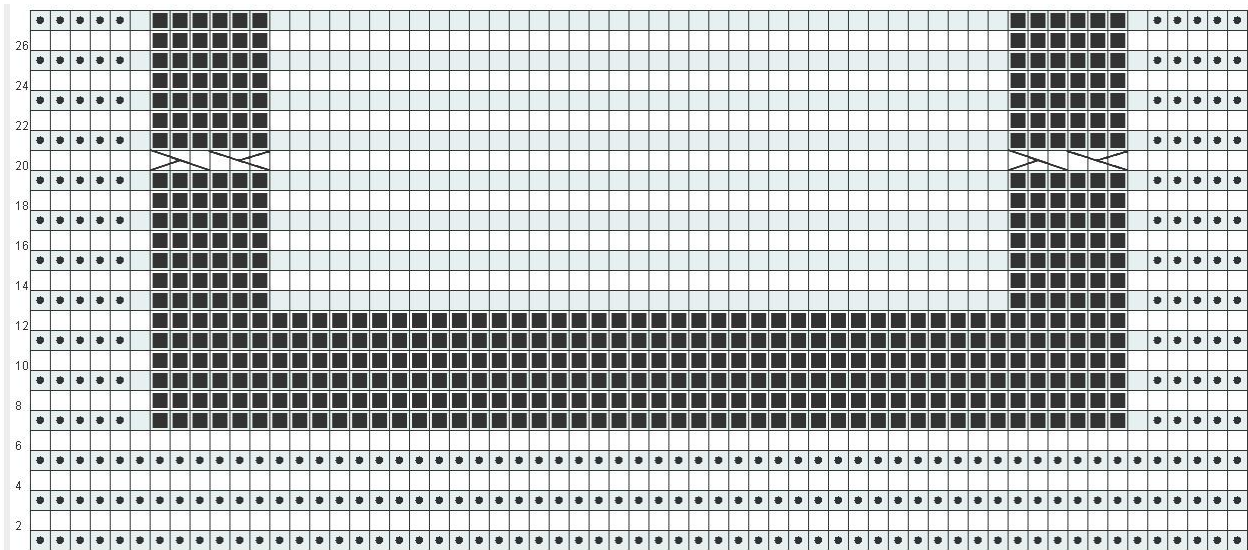
Row 22) A: K6 B: K6 A: K37 B: K6 A: K6

Row 23) With A: K5, P1. With B, P6. With A, P37. With B, P6. With A, P1 K5.

Repeat rows 22 and 23 two more times.

**** End Cable Repeat****

Continue with cable repeat until piece measures 14 inches.



Maintain cable side pattern and knit colour motif centered in solid block. I used a motif that was 27 stitches wide, which meant it had 5 main colour stitches worked on each side.

Following center motif, repeat original pattern for another 2.5 inches ending with a cable row (row 19).

The piece now measures approximately 26.5 inches.

To make neck edge:

Maintain side cable pattern along each edge. Each row instruction below is started from the edge of the contrast colour.

A chart is included below for clarification.

Starting after cable row on the wrong side.

Row 1) <side pattern> With colour A, P2. With B, P33. With A, P2. <side pattern>

Row 2) <side pattern> With A, K2. With B, K33. With A, K2 <side pattern>

Row 3) <side pattern> With A, P2. With B, P2. With A, P29. With B, P2. With A, P2. <side pattern>

Row 4) <side pattern> With A, K2. With B, K2. With A, K29. With B, K2. With A, K2. <side pattern>

Row 5) <side pattern> With A, P2. With B, P2. With A, P29. With B, P2. With A, P2. <side pattern>

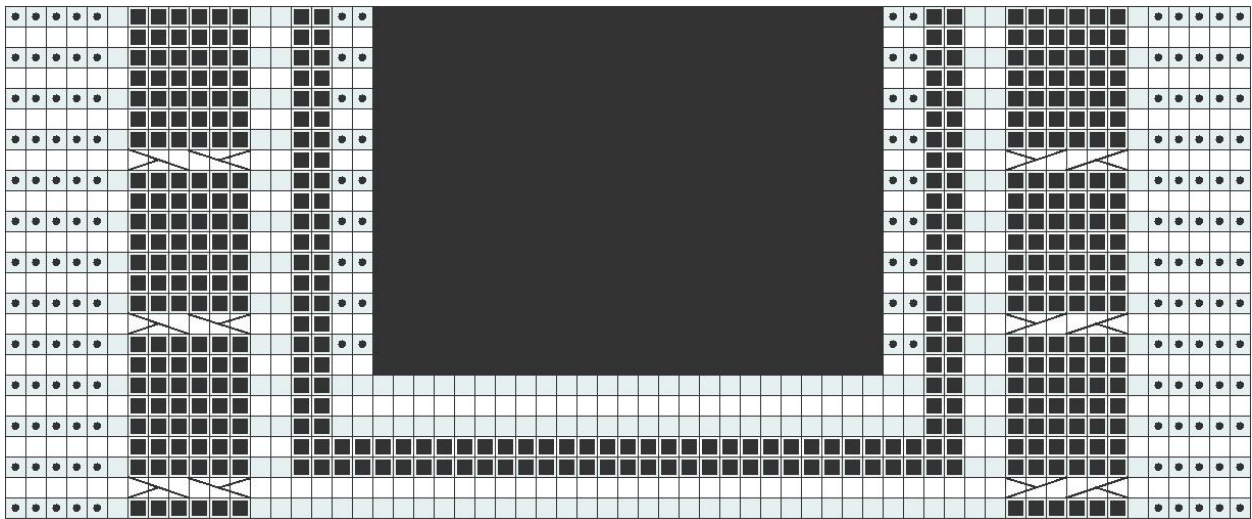
Row 6) <side pattern> With A, K2. With B, K2. With A, K2. Cast off 25. K2. With B, K2. With A, K2. <side pattern>

From this point on, shoulders are worked two at a time.

Row 7) <side pattern> With A, P2. With B, P2. With A, **K2**. <<BREAK>> With A, **K2**. With B, P2. With A, P2. <side pattern>

Row 8) <side pattern> With A, K2. With B, K2. With A, K2. <<BREAK>> With A, K2. With B, K2. With A, K2. <side pattern>

Maintaining side pattern, repeat rows 7 & 8 until shoulders measure 5", ending with 4th row from cable row. Cast off.



Back:

Work as front without center motif until piece measures 26.5 inches. Work neck edge as indicated.

Sew shoulder seams maintaining colour pattern. Attach i-cord at center waist for tying.

Chart symbols:



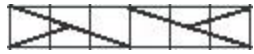
Knit main colour



Knit contrast colour



Purl main colour



C6F (in contrast colour)



C6B (in contrast colour)